

# Maine Water Level and Flow Standards

And public water supplies

Andy Tolman

Maine CDC Drinking Water Program



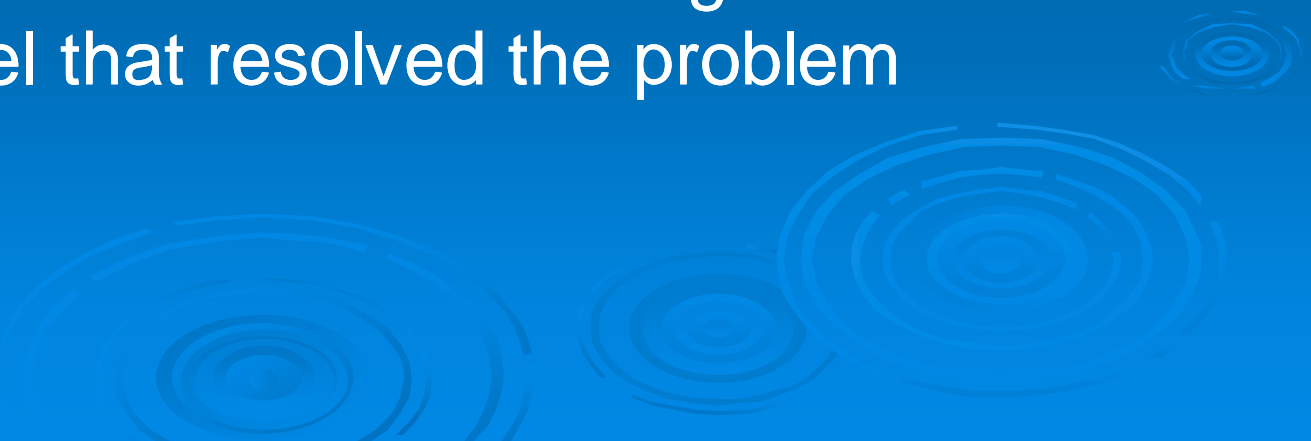
Maine Center for Disease  
Control and Prevention

An Office of the  
Department of Health and Human Services


John E. Baldacci, Governor

Brenda M. Harvey, Commissioner

# History

- About ten years ago, there was an incident in Aroostook County where potato irrigation from a small pond resulted in the pond being dewatered
  - A few years later, blueberry irrigation in Washington County was perceived to conflict with Atlantic Salmon restoration.
  - Both these incidents resulted in agreements at the local level that resolved the problem
- 

# Regulatory History

- With the impetus of these two conflicts, DEP began drafting amendments to water quality standards to include adequate quantity to maintain aquatic habitat
  - After a two-year stakeholder process, the Legislature set up a water use reporting program and directed DEP to develop rules.
- 

# The last five years

- We have collected data indicating that PWS withdrawals are the largest single consumptive reportable amount.
- A series of formal and informal working groups has wrestled with how to develop a water withdrawal management program in the context of the Clean Water Act.

# The New Rule

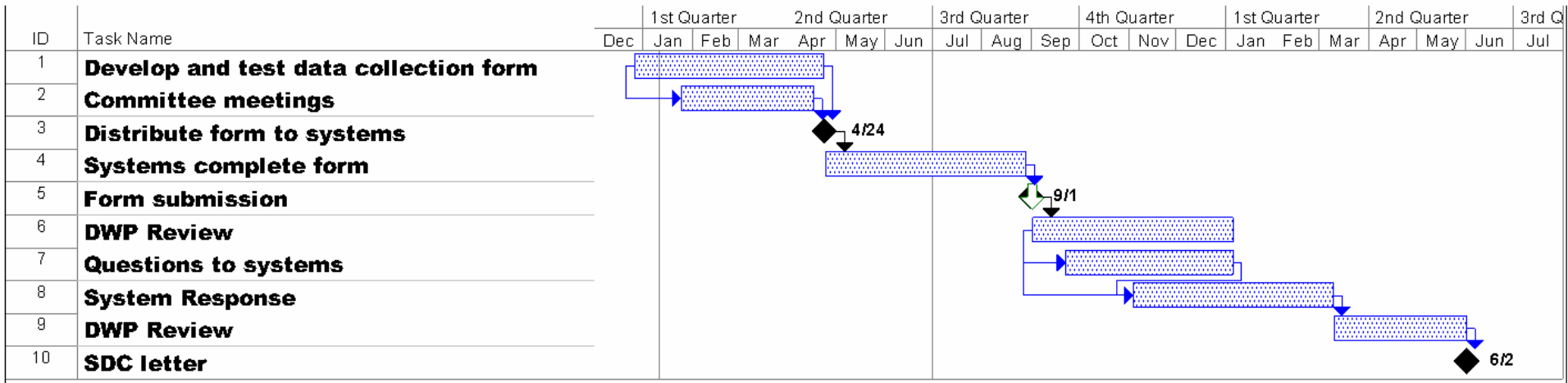
- Sets flow and level requirements for six seasons per year.
- Allows de minimus withdrawals in certain circumstances
- Provides an opportunity for a flow and level plan to meet standards
- Allows a 'withdrawal certificate' for existing PWS's who cannot meet flow and level standards

# Withdrawal Certificate

- Is to be jointly developed by DEP, the Drinking Water Program and the Public Advocate.
- Provides for balancing of the economic, Public Health, and Environmental values.
- Is supposed to ramp slowly towards compliance with environmental standards as the system grows and develops new sources

# Timeline

- DEP Rules were effective August 2007
- DWP rules draft final January 2008
- Data collection form testing Jan-April
- Systems complete form April-September
- DWP review/questions fall-winter
- System design capacity letters completed by June 2009



Project: SDCTimeline  
Date: Fri 1/11/08

Task		Milestone		External Tasks	
Split		Summary		External Milestone	
Progress		Project Summary		Deadline	

# System Design Capacity

- the amount of water that is available for Community Water System purposes
- annual withdrawal in total gallons per year
- taking into consideration actual documented annual withdrawal
- the investments in and limits of the existing system infrastructure, that provides a safe and dependable supply of water for public use.
- water treatment and distribution facilities and other necessary structures that determine how much water can be safely and dependably supplied that is present
- or in the process of being acquired ... as of the effective date of this chapter

### Typical Treatment Plant Model (Conventional)

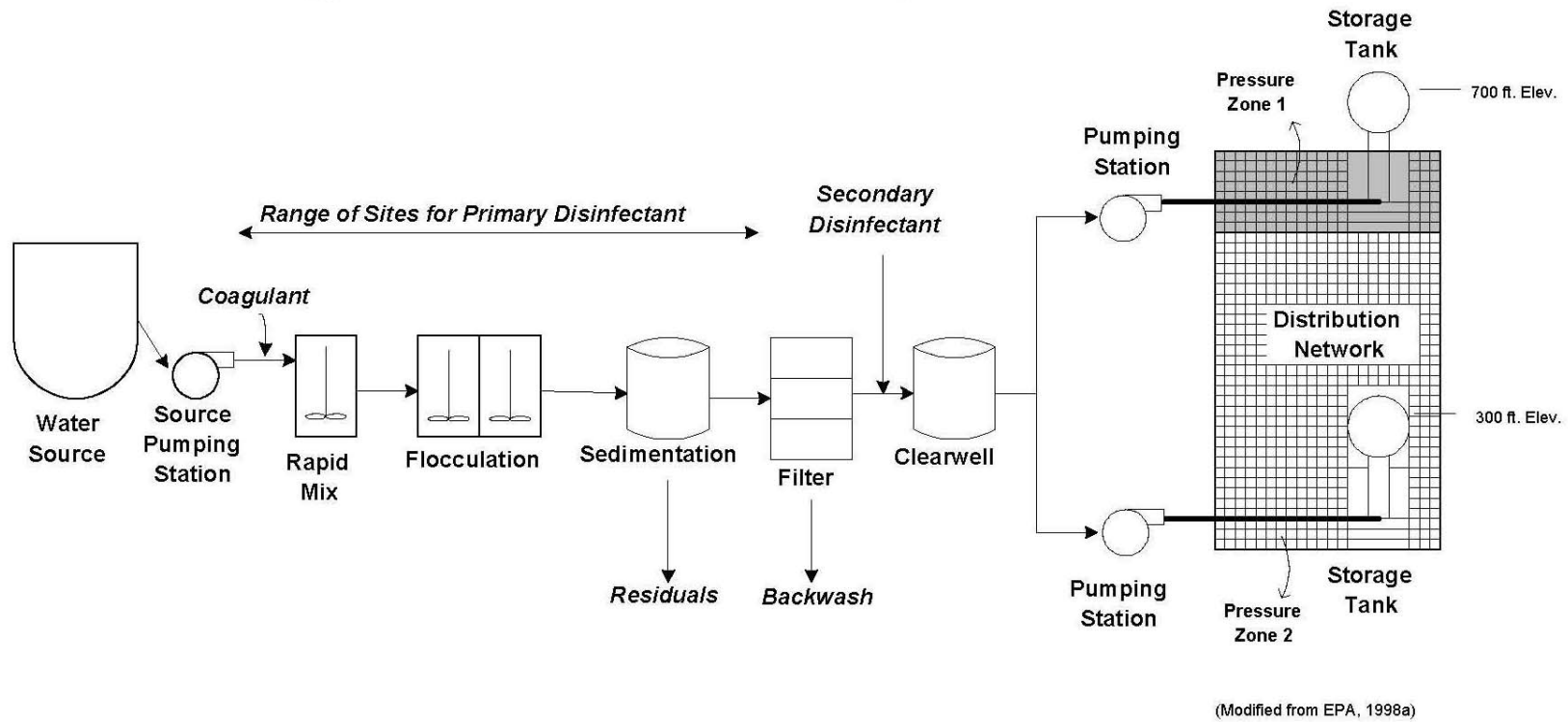


Figure 2-1. Schematic of a Typical Public Water System

# Existing Facilities

## Public Water System Design Capacity Documentation

<i>current</i>	design	achieved	
Intake			MG/y
treatment			
disinfection			
distribution pump			
recycle/process water			
<b>Current System Capacity</b>			

# Planned Facilities

<i>planned as of 7/07</i>	design	
Intake		MG/y
treatment		
disinfection		
distribution pump		
recycle/process water		
<b>Planned System Capacity</b>		