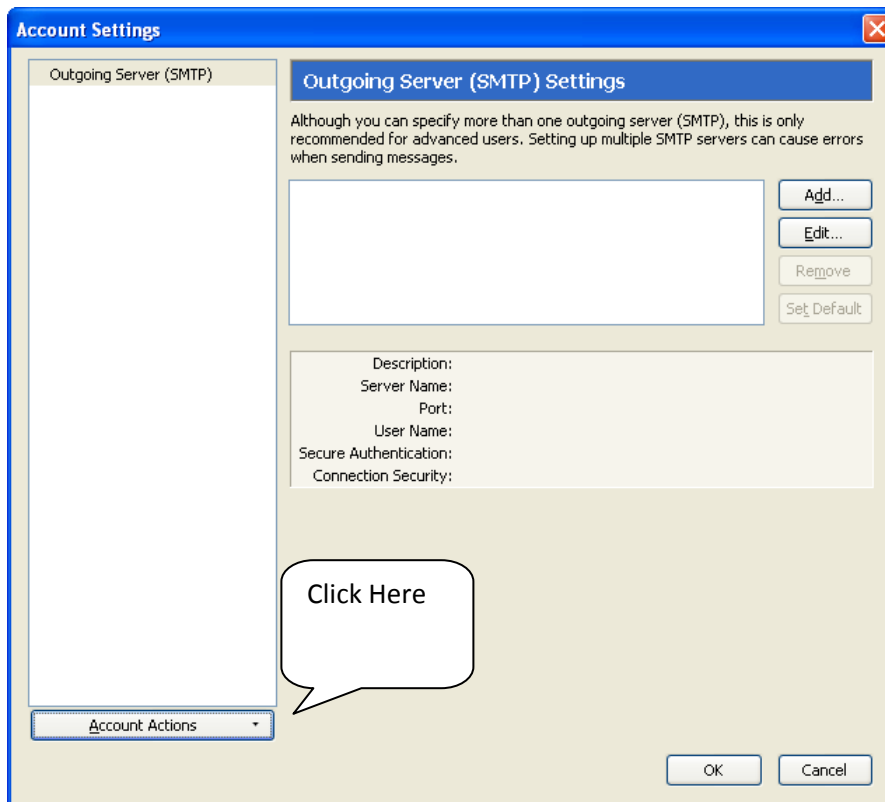


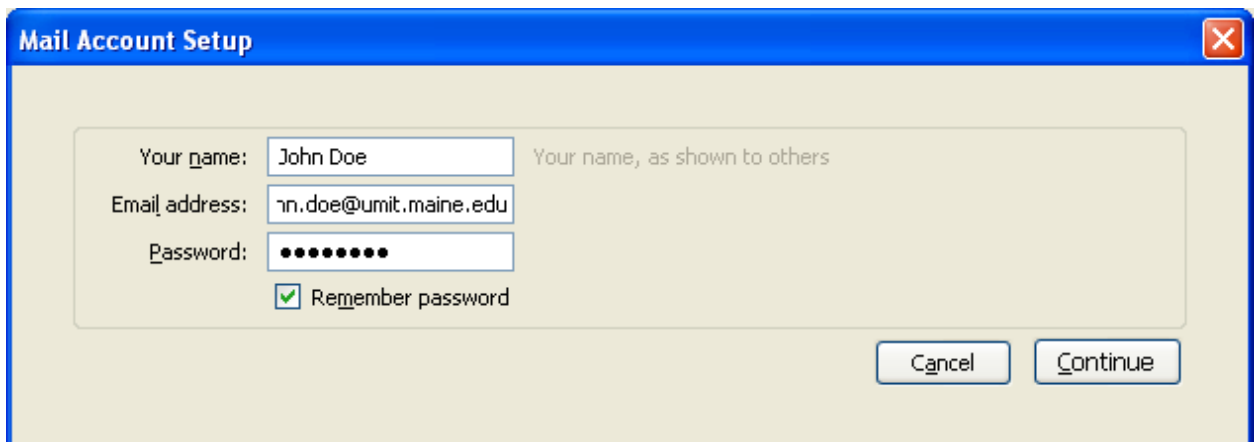
Configuring Thunderbird

After installing Thunderbird you need to configure it for use with your FirstClass mailbox.

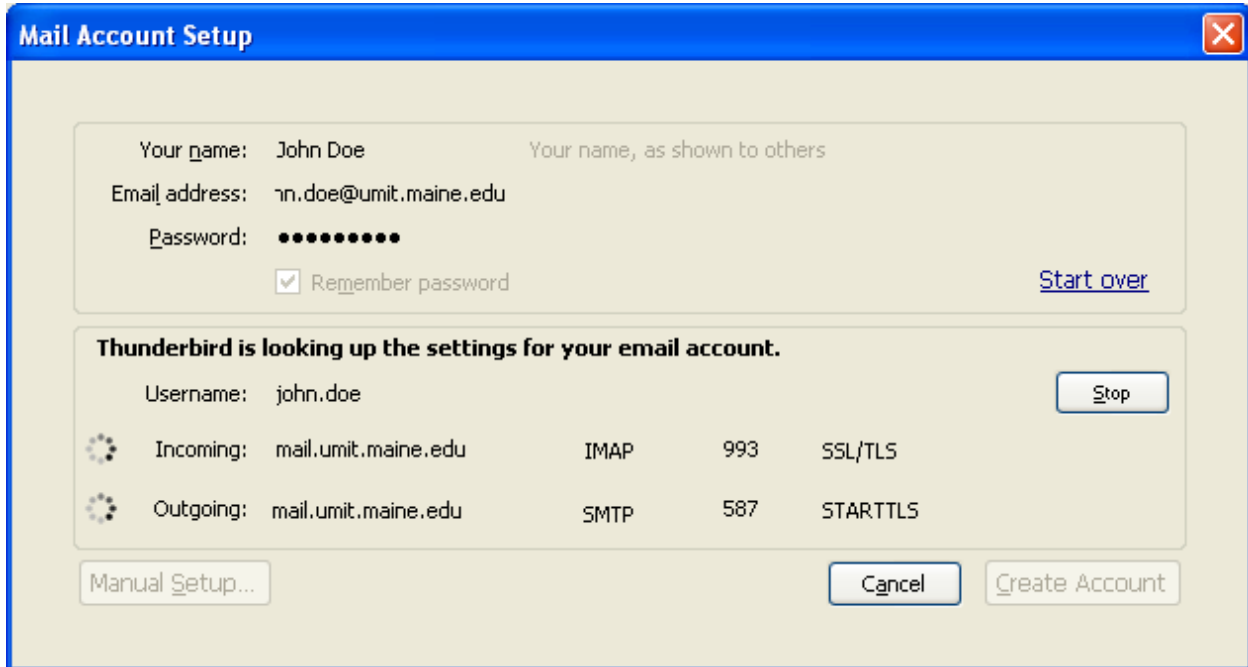
1. If you've not used Thunderbird before the Account Wizard should start on its own. To open it manually go to the **Tools** menu, choose **Accounts Settings**, and click **Account Actions** and then **Add Mail Account**.



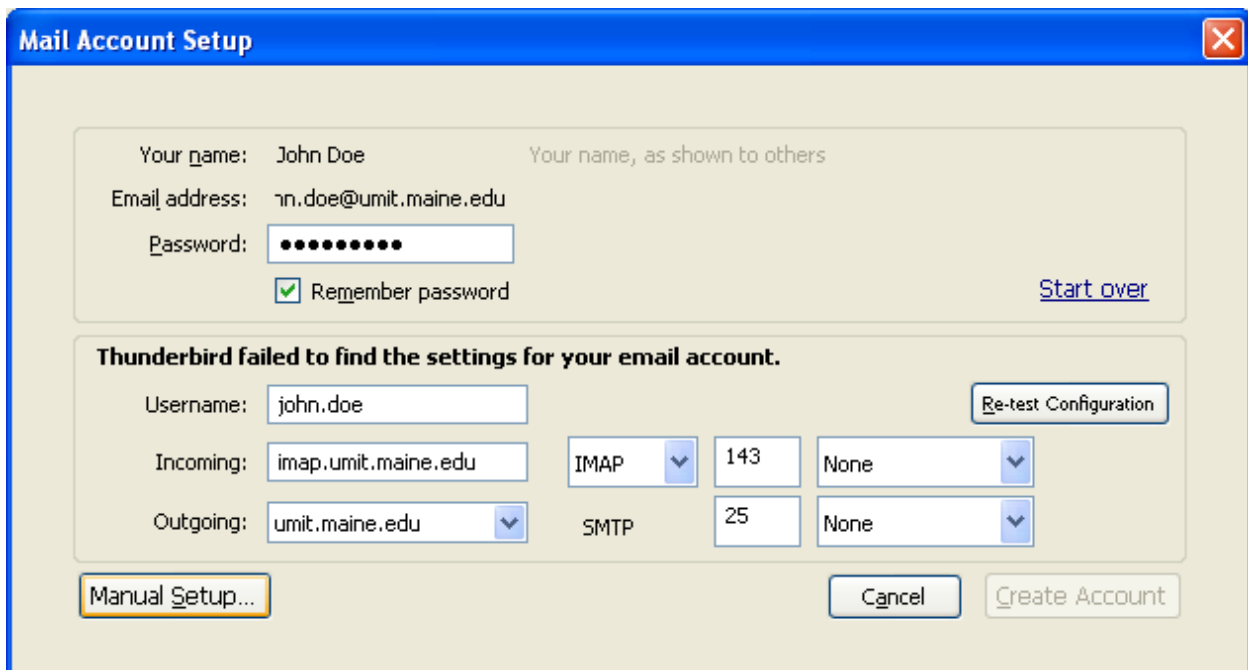
2. Enter your name as you want it to appear and your email address and FirstClass password and click **Continue**.



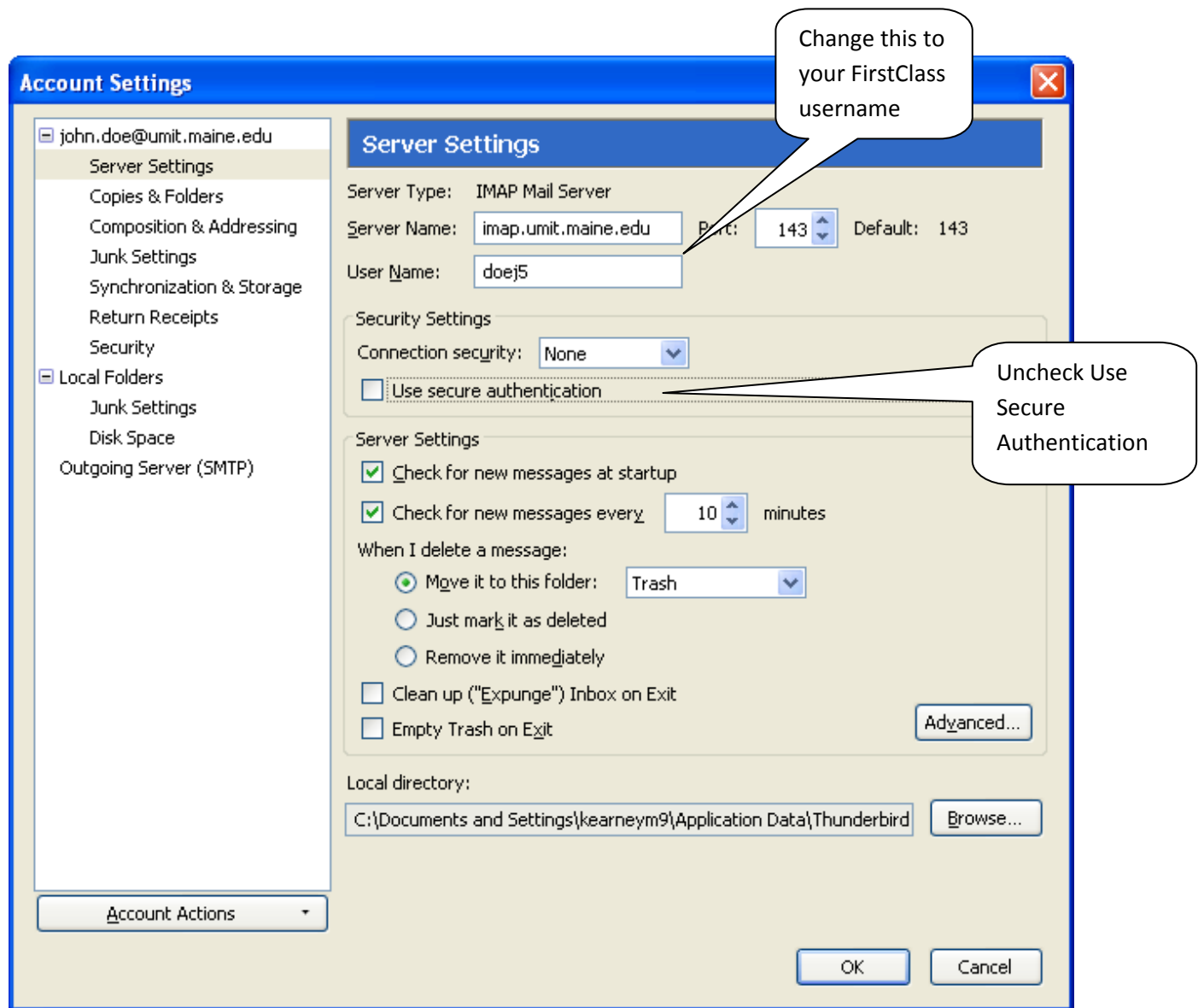
- Thunderbird will attempt to automatically configure your mail client.



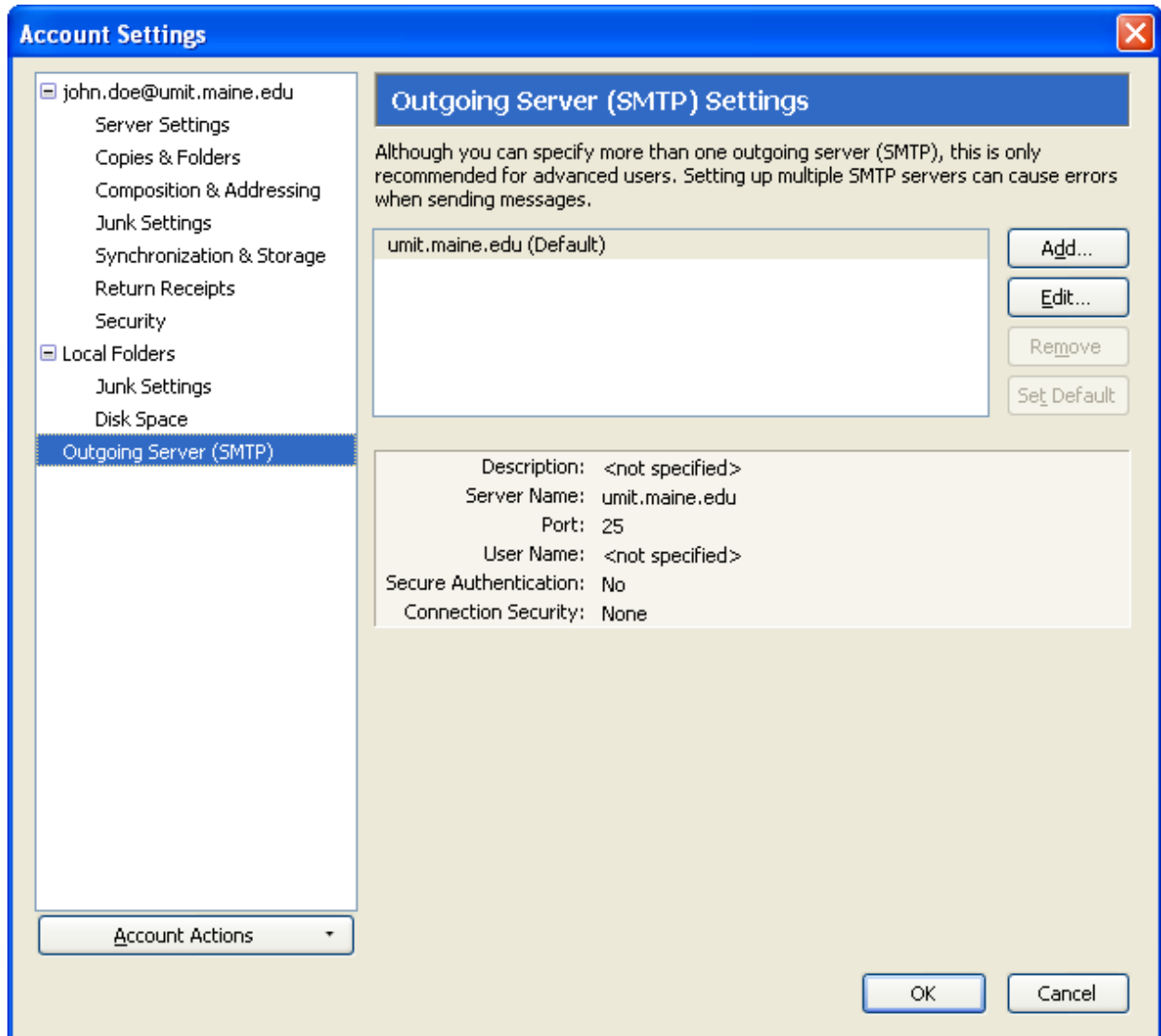
- When this fails, click on **Manual Setup**.



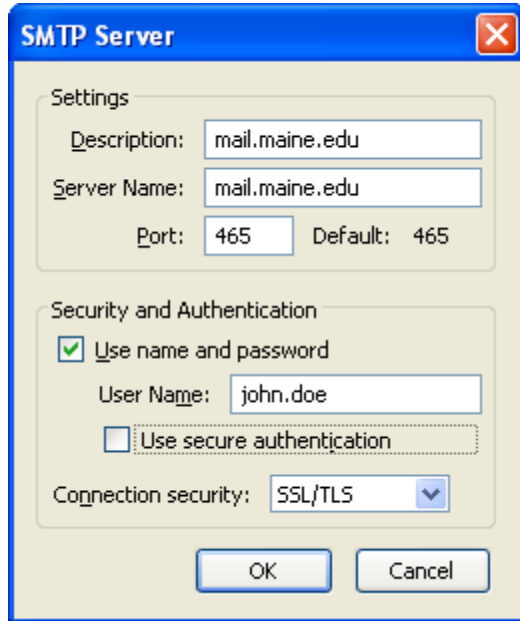
- Click on **Server Settings**.



6. Make sure the server name is **imap.umit.maine.edu** and the server type is IMAP.
7. Change the username to your FirstClass username.
8. Uncheck Use **secure authentication**.
9. Click on Outgoing Server (SMTP) in the right hand pane.



10. Highlight **umit.maine.edu (Default)** and select **Edit**.



11. Change the server name to mail.maine.edu.
12. Check Use name and password
13. Input your Mainstreet (UMS) username
14. Select SSL/TLS for Connection Security

Please Note: When you send or receive email the Thunderbird client it will ask you for a password. When you are receiving email you will use your FirstClass password, when sending mail use your Mainstreet (UMS) password.