

# Conservation Planning and Alternative Open Space Futures in the Maine Landscape



# ESI Project Team

Photo by CSC



Co-PI's: Christopher Cronan, Rob Lilieholm, and Tim Glidden

Graduate Assistants: Evan Adams, Natalie McCulligh, and Jon Kell

# Objectives

- Assess land conservation efforts in Maine at local to regional scales – what has been accomplished?
- Examine alternative open space futures using stakeholder input and GIS-based decision-making models



# Phase I: Historical Assessment

Partnership with State Planning Office

Land for Maine's Future (LMF)

Inventory of state, federal, local, private lands

Selection criteria for conservation lands

GIS analysis of indicators, assets, gaps in inventory

Overall assessment and recommendations

# State Inventory of Conservation Lands

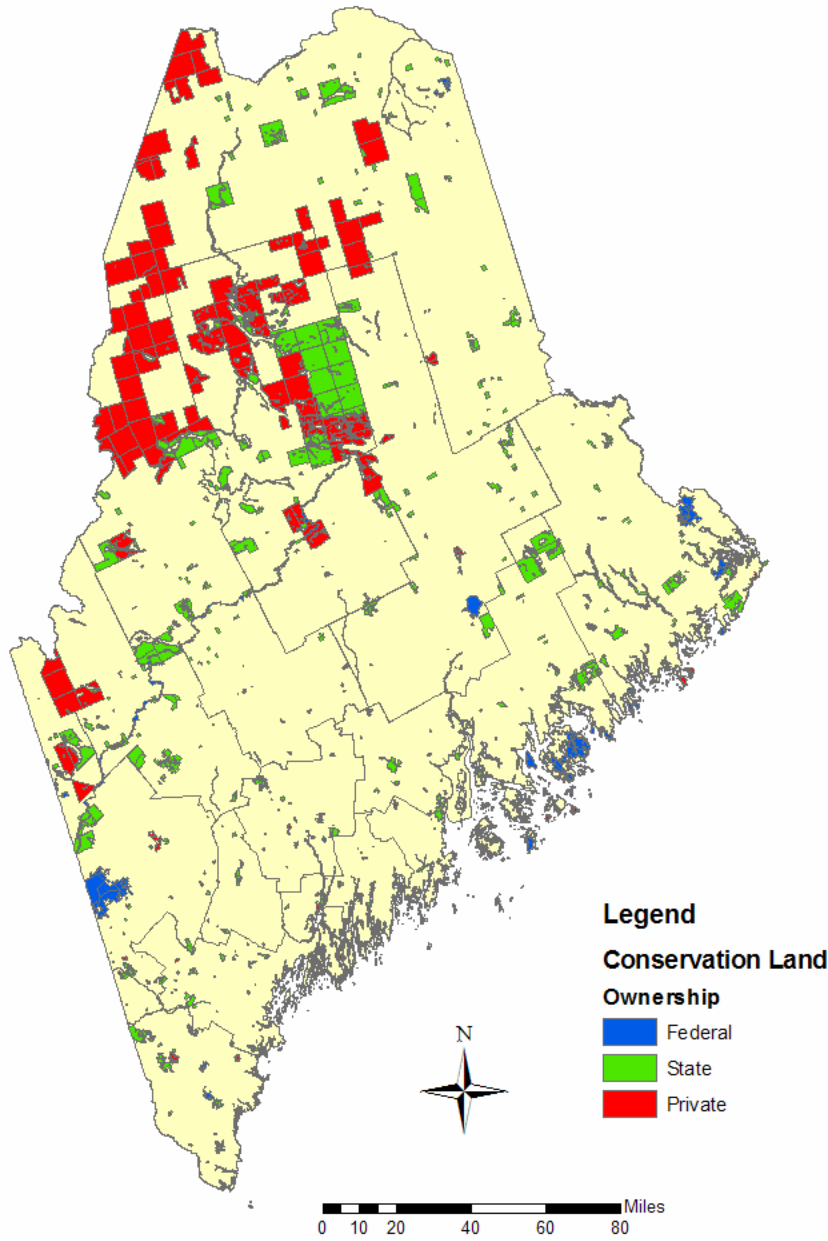
(acres of land)

<b>Sector</b>	<b>1993</b>	<b>2006</b>	<b>Change</b>
Federal	174,787	194,416	+ 11%
State	841,440	1,281,018	+ 52%
Land Trusts	35,862	2,085,200*	58 X
Municipal	20,389	112,349	5.5 X
<b>Total in Maine</b>	<b>1,072,478</b>	<b>3,672,984**</b>	<b>3.4 X</b>

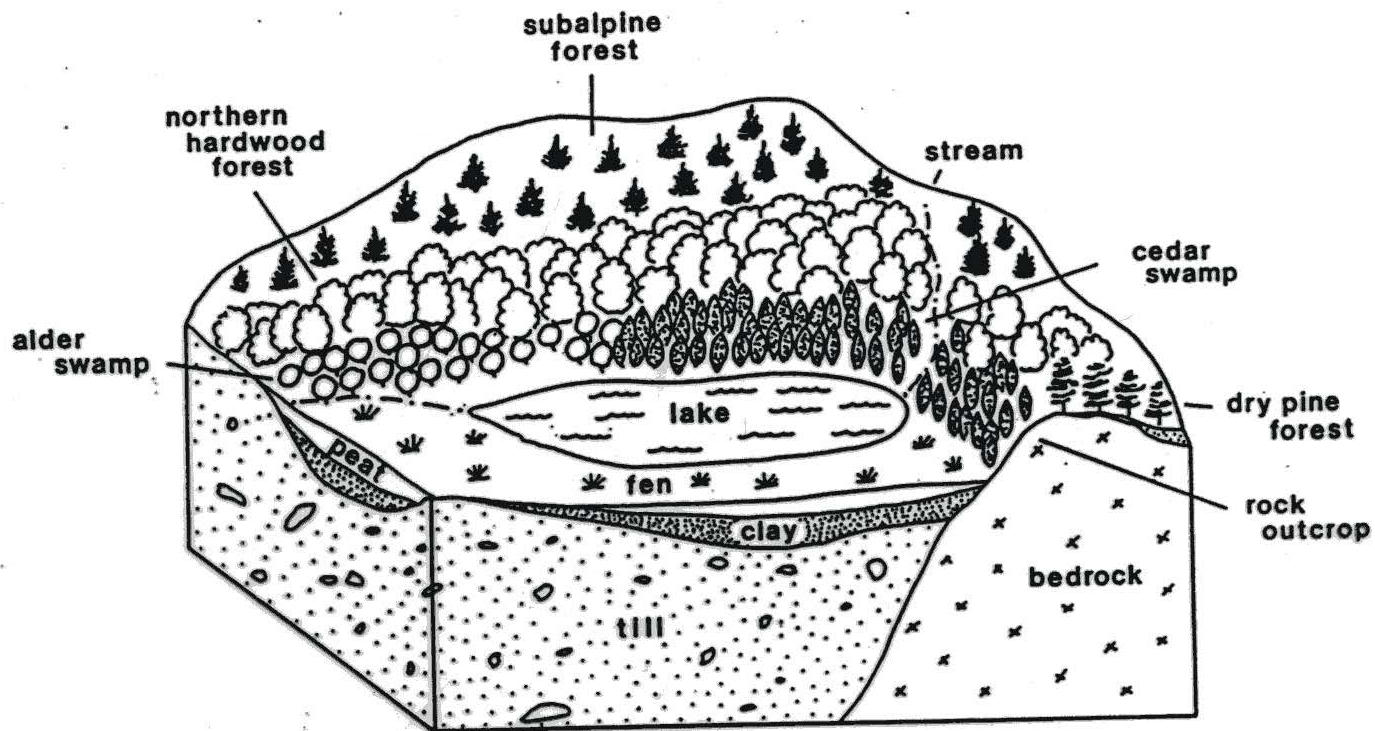
\* 81.5% of land trust holdings are in easements

\*\* Total = 45% fee, 55% easement

# Location and ownership of conservation lands

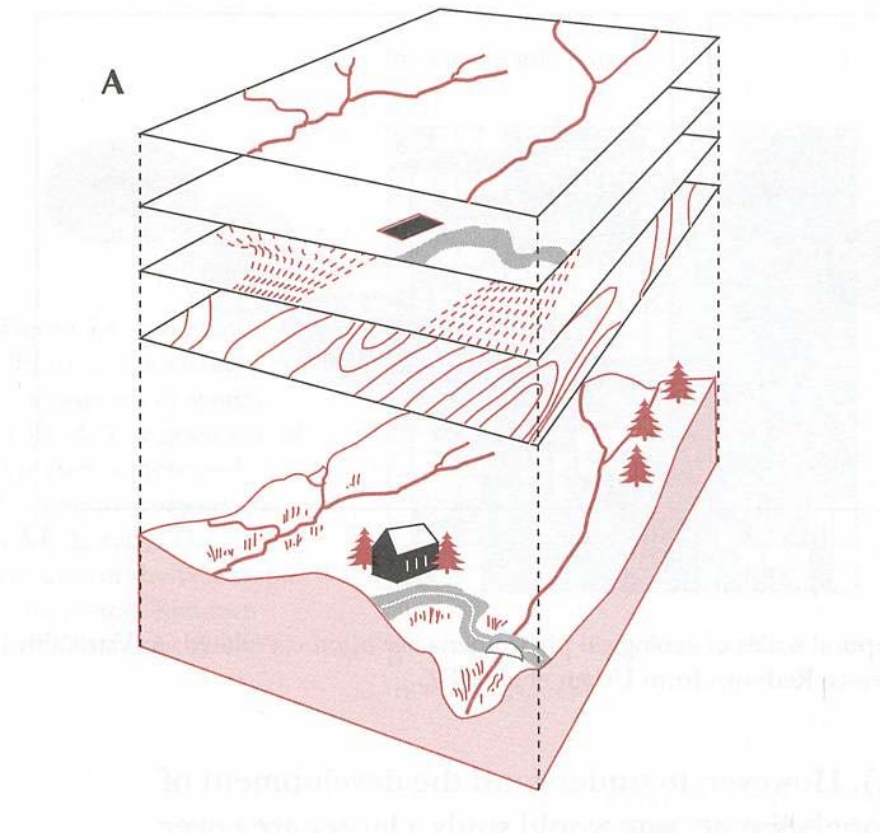


# Phase II: Decision-making tools and modeling alternative open space futures



# Engaging stakeholders in development of GIS decision-making models

- Local towns
- Land owners
- Land trusts
- Watershed coalition
- TPL regional group





Supported by an ESI grant

# Questions

